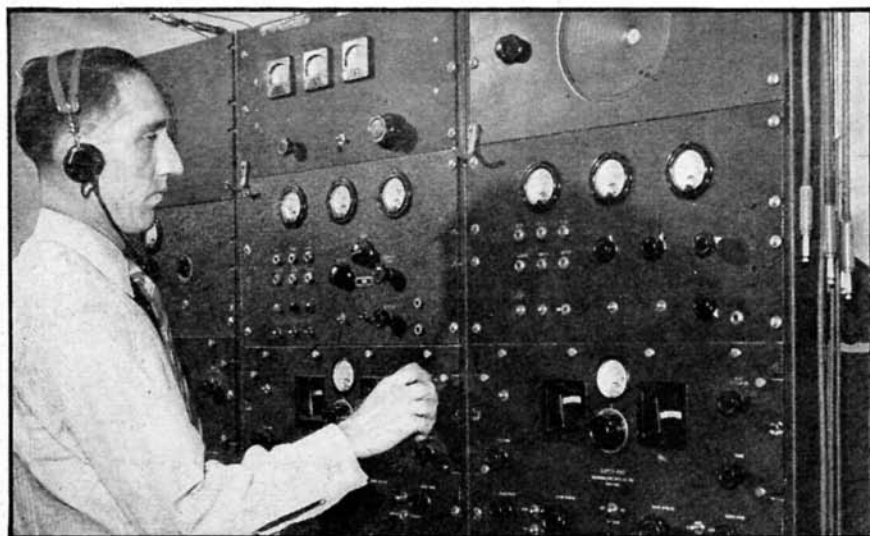


The "radio news" paper for busy radio men. An illustrated digest of the important happenings of the month in every branch of the radio field.



## UNITED STATES "LISTENING POST" AT VALHALLA, N. Y.

The accompanying photo shows what is believed to be the biggest non-commercial, radio receiving station in the United States. It is operated by United Press at Valhalla, Westchester County, New York, for the reception of "foreign" short-wave news despatches. This listening post receives scores of special news broadcast daily from European capitals. The operators also monitor dozens of short-wave voice and code "propaganda broadcasts" from the various foreign countries. A high-speed printer circuit connects the listening post with the New York office of the United Press.—U.P. photo.

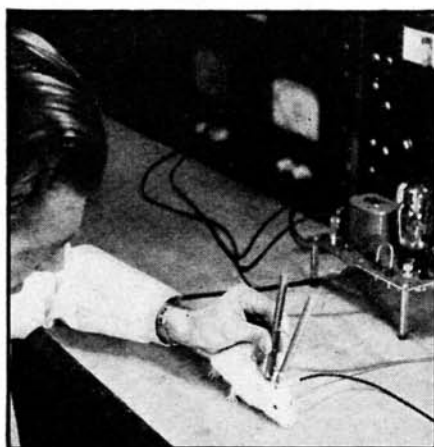
**Rice Weevils to Television:**—A high frequency radio tube which now helps to make television broadcasts practical was originally used to kill rice weevils spoiling millions of bushels of grain each year. Built by Westinghouse, the tube transmits 60 million cycles a minute. Insects which came within its range died instantly of a high fever.

**Tiniest Light Source:**—The tiniest of practical light sources is a midget Westinghouse lamp slightly larger than a grain of rice. It measures about 3/32 inches in diameter and 3/8 inches long. Surgeons use it to light throat and nasal passages during delicate operations.



## BRITISH COLOR TELEVISION

Photo shows Color Television receiver, with Mr. John L. Baird, its inventor, beside it. Even though England is at war, a great deal of television and other radio research is being carried on in the laboratory. On this receiver the image measures 2.5 feet wide by 2 feet high. The standard of scanning used with Baird's color television is 600 lines per picture.—Photo from D. W. Aldous.



## ELECTRO-SHOCK THERAPY

The photo shows the use of two special electrodes for applying high frequency energy to the brain of an albino rat. The apparatus in front of the rack is a converter. The rack contains a wide-range amplifier running from 0 to 200,000 cycles per second, and a supersonic signal generator with a maximum power of 50 watts.—Photo courtesy of General Electromedical Corp.

**New Acoustical Treatment for Studios:**—WOR's studios are having their faces lifted. It's for sound's sake, not beauty's—all the studios are being given a complete new acoustical treatment.

The revolutionary new method of acoustical treatment gives WOR studios "concert hall" quality. Music transmitted from any WOR studio will carry with it all the richness, the overtones, sharpness and instrumental perspective that were heretofore possible only in a broadcast from an acoustically perfect concert hall.

This new technique makes every studio a composite of uneven surfaces, giving it a slightly surrealist appearance. Various shapes and sizes of sound-absorbing baffles (some square, some rectangular; others

triangular) are applied irregularly to the four walls of each studio, so that no two surfaces are directly parallel. Floors, of course, must remain flat; however, wedge-like baffles are added to the ceilings to make them irregular in surface.

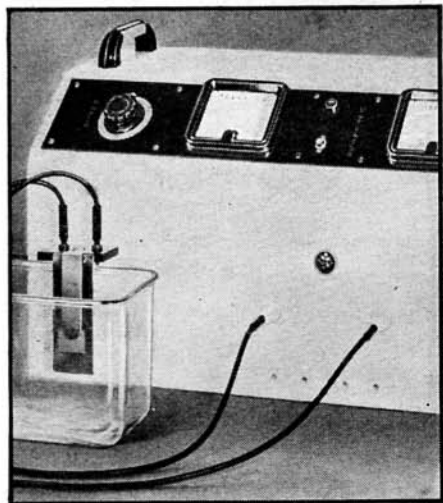
## Red Network Stations Gain Power Increases

Since April five power increases in the daytime and ten at night have been granted NBC Red Network outlets, with the FCC authorizing 24 additional power increases, one frequency change and 20 equipment improvements for Red Network stations. Many of the authorized changes are under construction and should be in operation in the near future.

The power increases granted Red Network stations are as follows: KDYL, Salt Lake City, 1000 to 5000 night; KFYR, Bismarck, 1000 to 5000 night; KGNC, Amarillo, 2500 to 5000 day; KRIS, Corpus Christi, 500 to 1000 day and night; WAPO, Chattanooga, 250 to 5000 day, and 250 to 1000 night; WBEN, Buffalo, 1000 to 5000 night; WFOR, Hattiesburg, Miss., 100 to 250 day and night; WRAC, Washington, 1000 to 5000 night; WSAI, Cincinnati, 1000 to 5000 night; WSOC, Charlotte, 100 to 250 night; WTMJ, Milwaukee, 1000 to 5000 night; KTSM, El Paso, 500 to 1000 day; KGHL, Billings, 1000 to 5000 night.

In addition five stations have been added to the Red Network since April. They are: KDKA, Pittsburgh, operating on 1020 kc., with 50,000 watts power; WBAL, Baltimore, operating on 1090 kc., with 50,000 watts power; WCRS, Greenwood, S. C., operating on 1450 kc., with 250 watts power, and WHIS, Bluefield, W. Va., operating on 1440 kc., with 500 watts night and 1000 watts power days.

Now available to the Red Network are WEAU, Eau Claire, now operating on full power; WFEA, Manchester, available to Red only, and WSFA, Montgomery, now in the Red South Central Group.



## ULTRA-AUDIBLE SOUND GENERATOR

A whole new world of scientific experiment has been opened up to physicists and physiologists by the introduction of the ultra-sonic or super audible sound generator, one type of which is here illustrated. These super audible sounds do many queer things, such as crystallizing liquids, killing small fish and frogs, destroying red corpuscles, etc. The apparatus shown gives 80 watts of ultra-sonic energy at 400 kc.