

KSYC . . . 250 W

Yreka, California

by JACK R. WAGNER
Manager

KSYC, a 250-watt AM station, located in Yreka, California, presents another good example of efficient design for the smaller radio station. In order to hold down operating expenses, the station combines both studios, offices and transmitter in a single building. It is operated by the Siskiyou County Broadcasting Company.

When the KSYC building was designed, more emphasis was placed on providing ample control room and office space than in building a large studio. The building includes a roomy reception room which doubles as the general offices, and an adequately large control room, work room, and manager's office. (See Fig. 1).

When local shows require an audience or a large orchestra, the programs usually take place in the theatre or hotels and are fed remote to the studio. The addition of a large studio may come later by the simple construction of another wing on the left side of the building. In this way the outside window of the control room can open on the large studio. The reception room window can become a doorway into the new wing.

The 250-watt RCA transmitter is installed flush with the wall (Fig. 2). The rear of the transmitter opens on the work room. This type of construction provides easy accessibility to the unit for servicing.

FIG. 1. This floor plan shows the layout of the transmitter, offices, and studio of Station KSYC. Additional studio space can be provided by the addition of a wing on the left side of building.

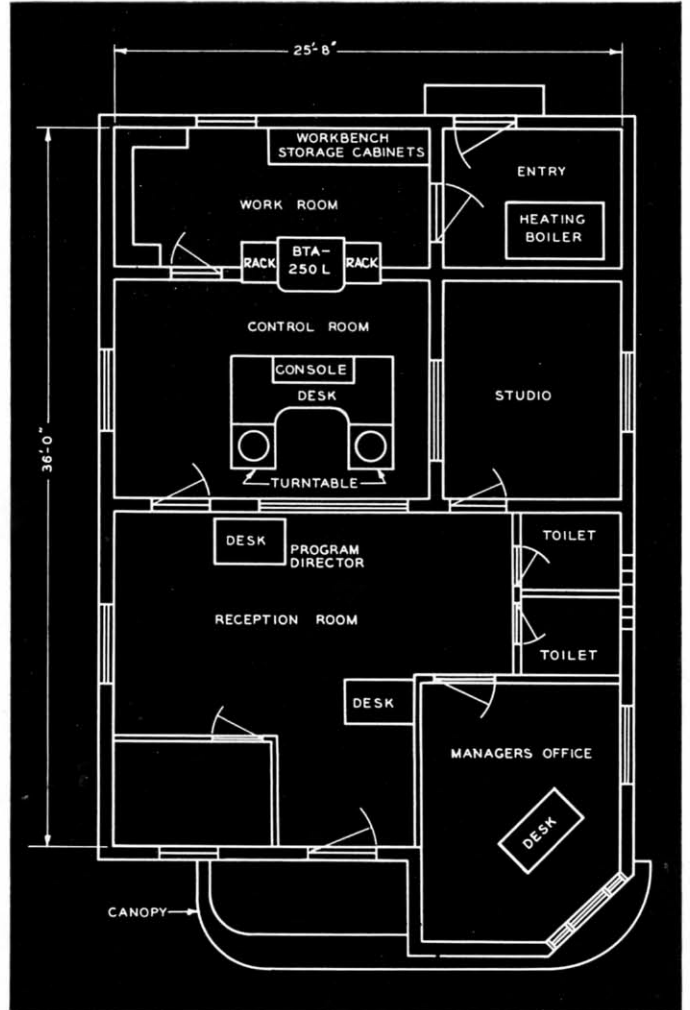


FIG. 3. Photo at lower right shows the single story studio-transmitter building of KSYC with antenna tower at left. The building is constructed of cinder blocks and employs radiant type heating.

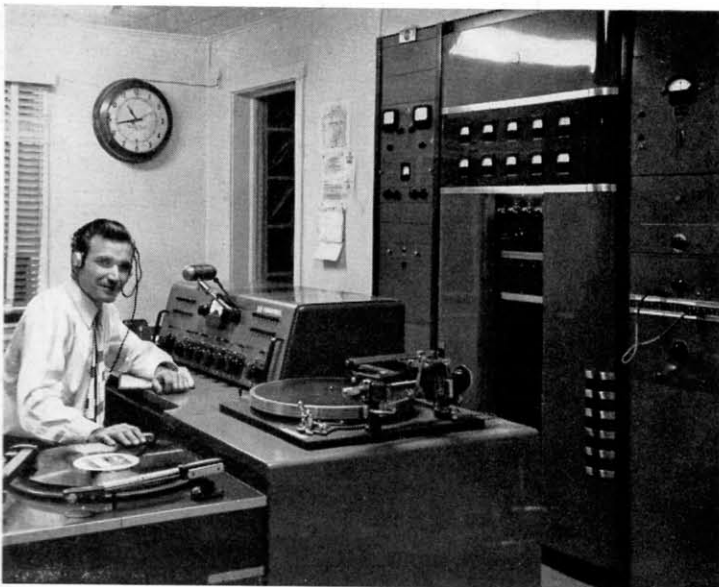


FIG. 2. The 250-watt RCA transmitter, mounted flush with the wall, provides a neat unified appearance. The transmitter is flanked by audio and test equipment racks.

