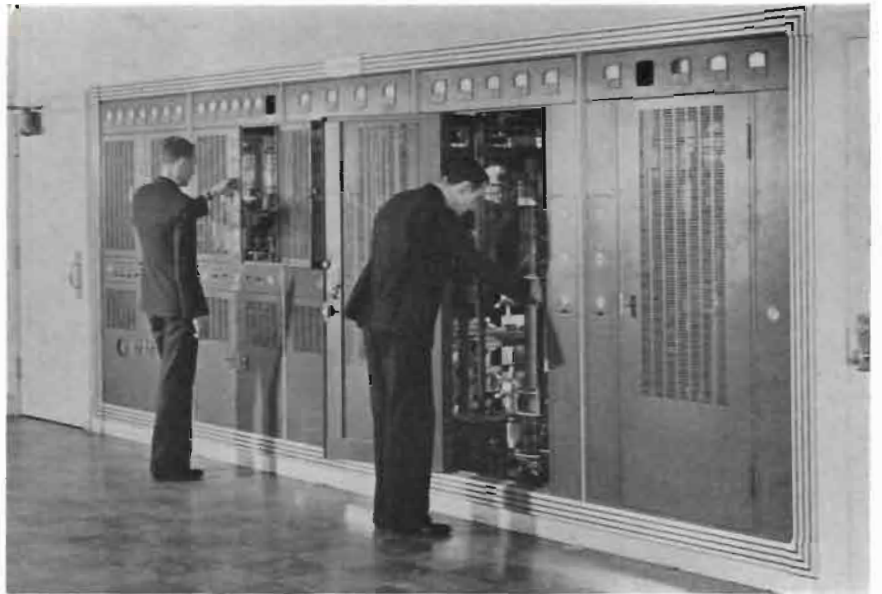
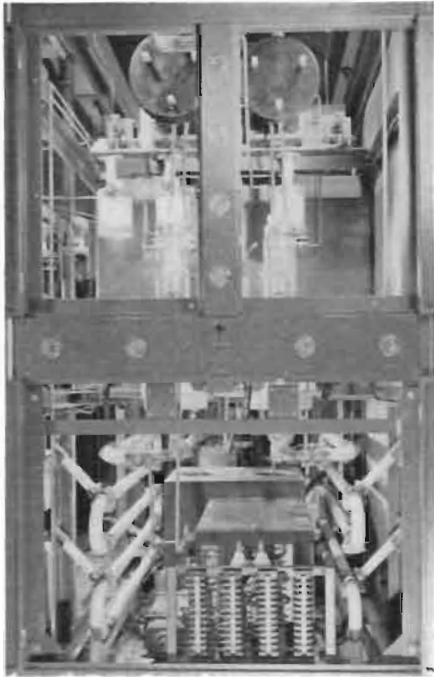
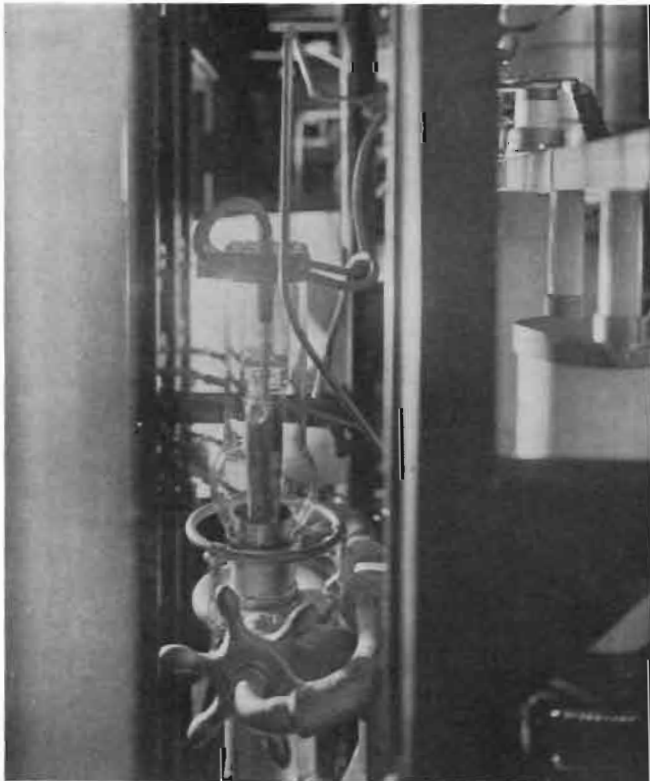


A view of the modulating amplifier of the new 50-kilowatt transmitter of WHAS.



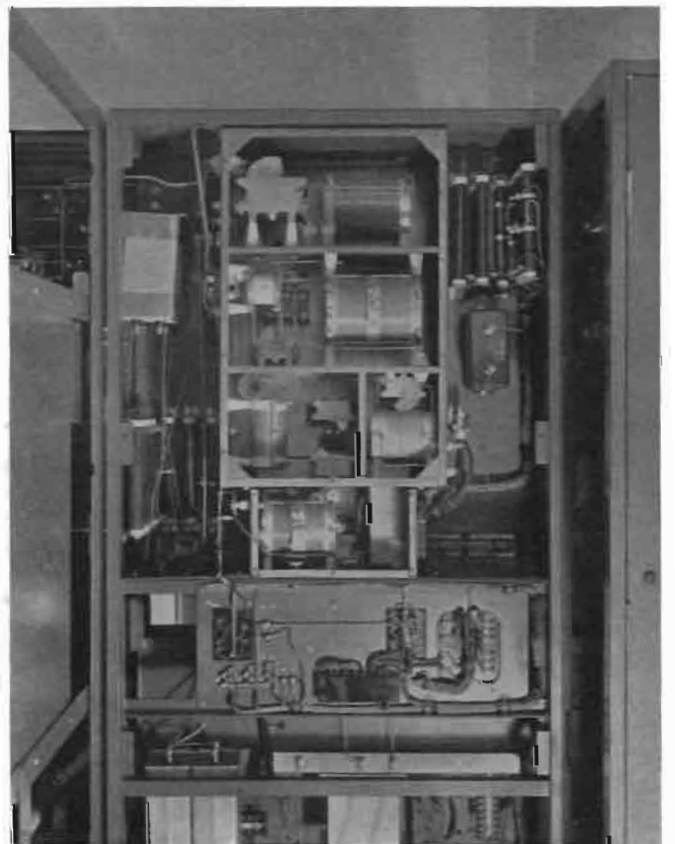
Engineers inspecting WHAS's new Western Electric transmitter.

RADIO STATION WHAS



One of the two 100-kilowatt final amplifier power tubes used in the Doherty circuit.

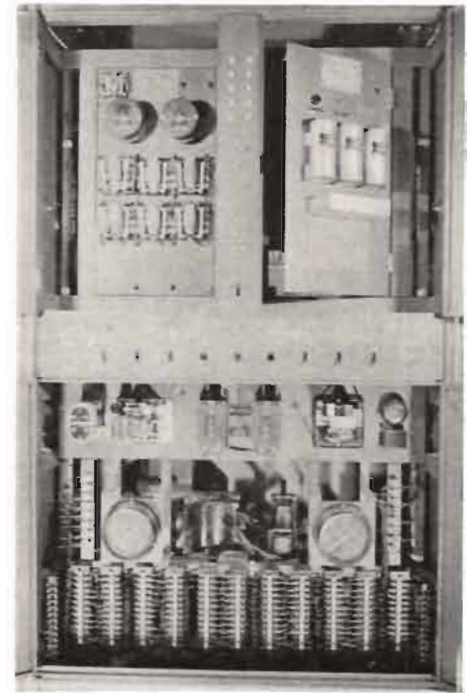
Rear view of the oscillator amplifier in the new transmitter.





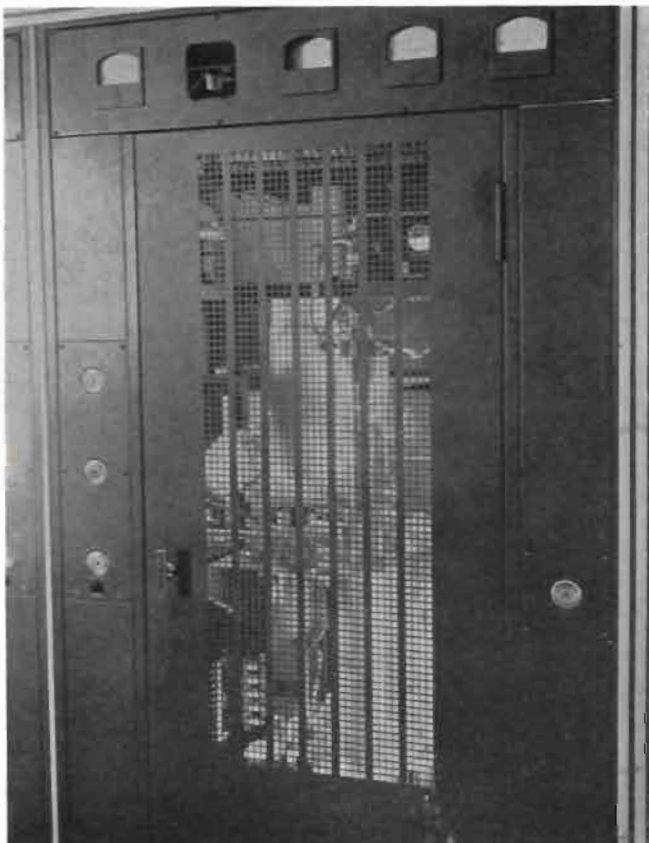
View of nitrogen filled coaxial transmission line and 650-foot Blaw-Knox radiator.

The power control cabinet at WHAS's new 50-kilowatt transmitter.



LOUISVILLE, KENTUCKY

Front view of the two final output amplifiers, showing 100-kw tubes.



Station speech-input bay, with automatic program amplifier, microphone and monitoring loudspeaker.