



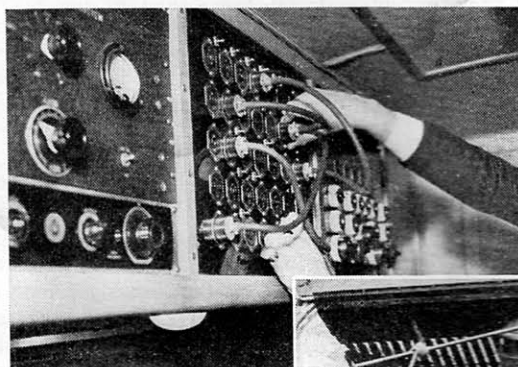
(Top) Sitting on the roof of WBBM's unit, the announcer describes the latest spot news.

(Lower) Engineer R. Norene watches spot news being recorded for future transmission.

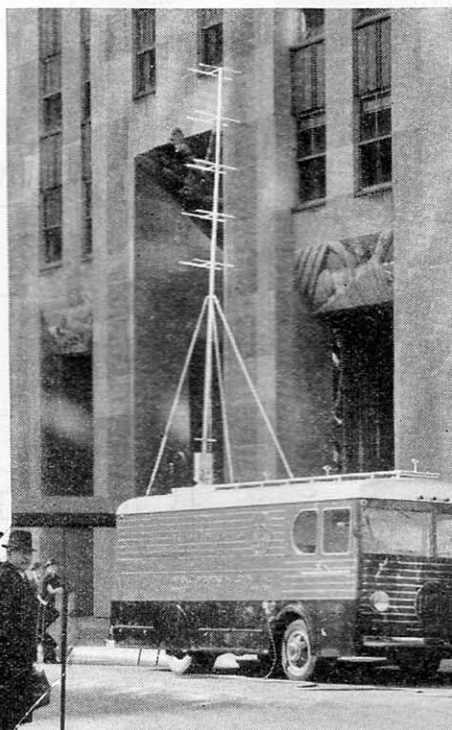


California's Highway Patrol station KAPA which relays valuable police information to headquarters KADJ in Sacramento. A 50 watt transmitter used.

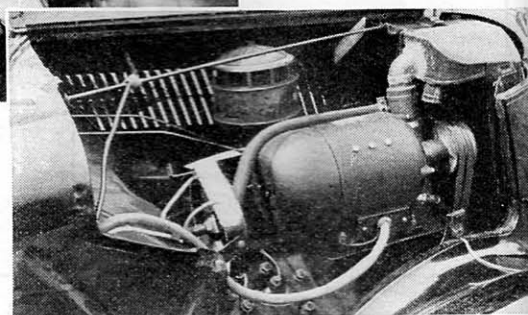
Mobile



Many plugs, many connections (called "patches"), cross-connect the various circuits so that the program goes into the proper channel and to the right net work. The panel is in the mobile unit. At the extreme left is the audio monitoring control board.



The special 110v. AC 600w. fan-belt driven generator supplies power where lines are unavailable.



NBC's mobile television transmitter with special antenna to transmit the programs direct to the Empire State Building for re-transmission.

Engineers McMahon and Whitam demonstrate the Cleveland mobile unit. One carries a full pack short wave transmitter, while the other is monitoring him on a small portable receiver. In the truck is a medium powered transmitter, amplifier, etc.

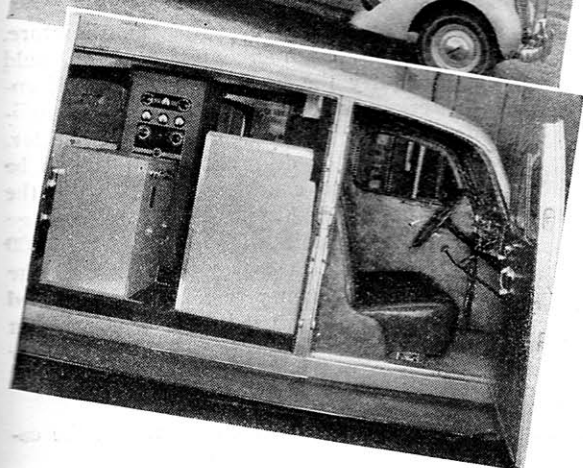


Pickup

IN THE comfort of our homes, little do we realize the extent to which the broadcast companies go to bring us the story from the location where it happens. Their equipment is growing day by day. It is practically impossible for anything to happen in a place where the station cannot send its men or trucks for the spot news. All operators of mobile units have to be licensed by the Government if they operate a transmitter itself.

WKY of Oklahoma City, Okla., the only mobile unit with its own antenna. The four poles and antenna can be installed in bumper sockets in less than four minutes.

(Lower) An RCA transmitter and full associated equipment. A regular auto receiver is used to hear the home station.



(Top) Rear view of New York mobile unit showing transmitter panel and set

(Bottom) The motor generator furnishes power. Control panel next to it, is for voltage regulation and the high voltage power supplies.

