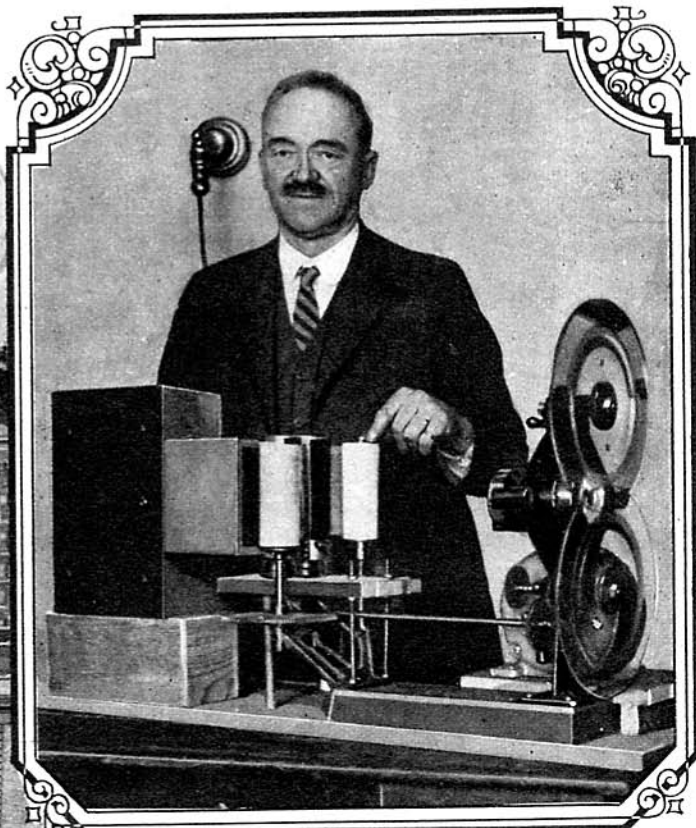
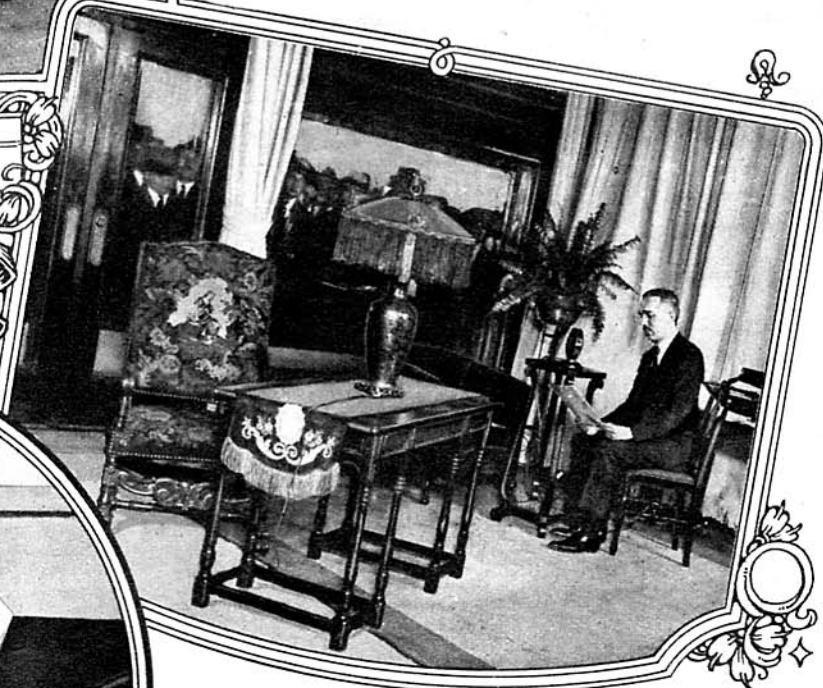


GIMBEL BROTHERS' NEW STATION. WGBS, the towers of which are shown in the upper photo, and the novel glass partitioned studio to the right. Visitors to Gimbel Brothers' store in New York City have the opportunity of "looking-in" on the studio and viewing every phase of the operation of the station. WGBS transmits on the wave-length of 316 meters. © Kadel & Herbert.



PROJECTION OF PHOTOS BY RADIO is made possible by the use of the illustrated apparatus, the invention of C. Francis Jenkins of Washington, D. C. The device has been put to the novel use of transmitting business forms, letters and general correspondence. It can transmit news copy at the rate of 100 words per minute. © Henry Miller News Picture Service, Inc.



RADIO FOR THE DEAF has been made possible by this new device shown at the recent Medical Exhibition at Westminster, in England. The set is of ordinary type, employing two vacuum tubes. The contact device, which takes the place of the usual headphones, when placed against the elbow, knee or forehead, faithfully imparts the vibrations to the bones of the listener, which in turn affect the auditory nerves. It has been stated that a lady visitor to the Exhibition, who had not heard for 40 years, was able to hear music through the medium of this instrument.

Pictorial Radio News



"PREPARE-BROADCAST" says this microphone to the artist and is perfectly silent. Beneath the regulation microphone is an electric sign that does the informing. It is controlled by the studio announcer.

© United.



A WANDERING MINSTREL OF THE AIR. "Nate" Coldwell, known throughout the country as the "Joy Digger." He keeps moving and the radio audiences are getting used to his popping up in different stations. He came east three years ago from Chicago to Dartmouth College. A year before graduating, the doctors told him he had developed tuberculosis and would have to quit college and get out into the air. "Nate" went the doctors one better; he not only got out into the air, but got out onto the air.

© United.

THE FRISCO POLICE JAZZ BAND is making a big hit. Although organized only a few months, the jazz orchestra of the San Francisco Police Department has already become famous. The members are shown in the broadcast studio of station KPO, making the microphone shimmy with syncopation.

© Kadel & Herbert.

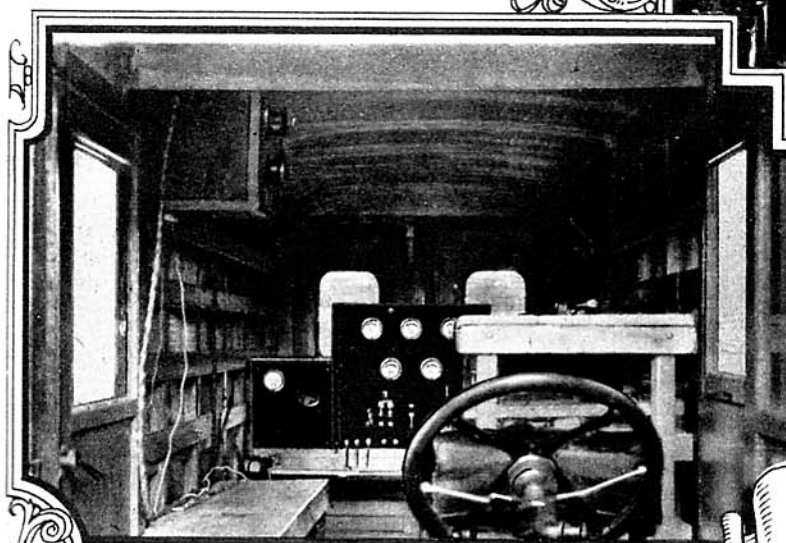
THE MOST POPULAR RADIO ANNOUNCER. George Dewey Hay and the silver loving cup made in the form of a microphone presented to him at the termination of a recent contest in connection with the New York Radio Show. Mr. Hay is now stationed at WAHG, the new Grebe broadcast station at Richmond Hill, N. Y.

© P. & A. Photos.

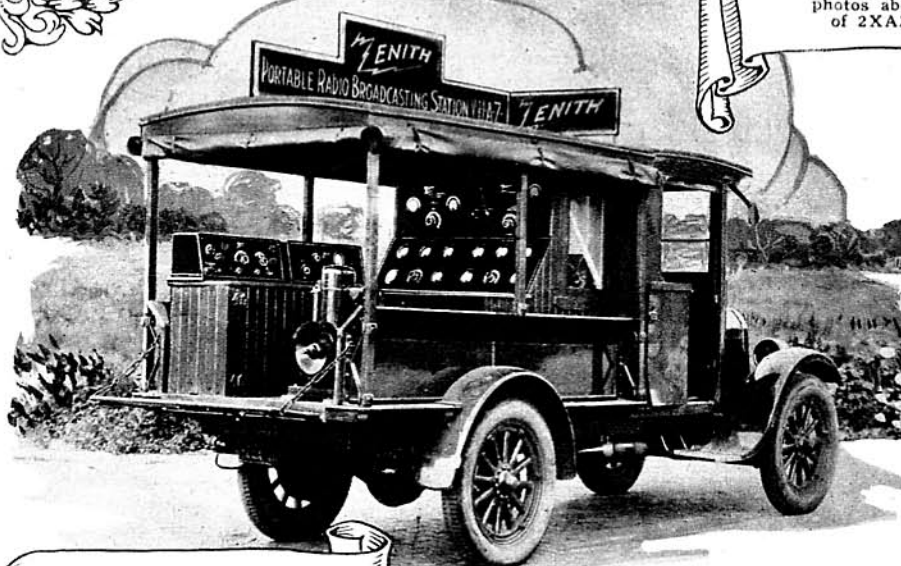


Portable Broadcast Stations

2XNA and WJAZ, both gasoline go get 'em broadcasters that hunt their own programs.



GOES AFTER ITS PROGRAMS. Portable station 2XAZ picks up programs within a radius of 50 miles of station WGY and transmits them on a wave of 100 meters. The programs are picked up by WGY and rebroadcast. The two photos above show an interior and exterior view of 2XAZ. Note the antenna atop the Ford.



WJAZ ON WHEELS. Two views of the Zenith portable broadcast station. It has a power of 100 watts, and transmits on a wave-length of 268 meters.

SOMETHING novel in broadcast stations is shown in the accompanying illustrations. WGY has its new pick-up stations mounted on a truck which can be driven to wherever an interesting event is to take place. The portable station transmits on a short wave-length to the main station in Schenectady where the program is rebroadcast on 380 meters.

The other portable station, WJAZ, is self-contained in respect to antenna equipment, amplifiers, batteries, etc. The station can be set up in the middle of a field without any other power supply than its own and without any supports other than its own antenna mast. It operates indefinitely, especially since it is equipped with a complete gas engine generator charging outfit, which is able to charge the batteries while the outfit is in broadcasting operation. This feature is of special interest, as otherwise the period of operation possible would be rather short.

The set is of 100 watts power and uses four 50-watt tubes, two as oscillators and two as modulators. All the apparatus is completely panel mounted.

TRUCK AND MAST

The entire truck is electric lighted with spot lights on the panels, as well as a number of spotlights designed to illuminate the antenna mast which is of sectional type such as was used by the army during the war. It is 53 feet high.

The antenna is extremely novel, consisting of four heavily braided copper cables with extremely fine wire making them extraordinarily flexible. These wires are provided at each end with snap hooks which are attached to rings which fasten to two spreaders. Clips are provided on each spreader for connection purposes.

The battery supply is 24 volts with a total of 320 ampere-hours. This battery arrangement operates a 24 volt to 1,500 volt direct current generator which is equipped with the necessary filter system to eliminate hum. A

(Continued on page 1226)