

BALTIMORE LISTENS IN ON WCBM



▲ Studio C facing Control Room showing Transcription Turntables.

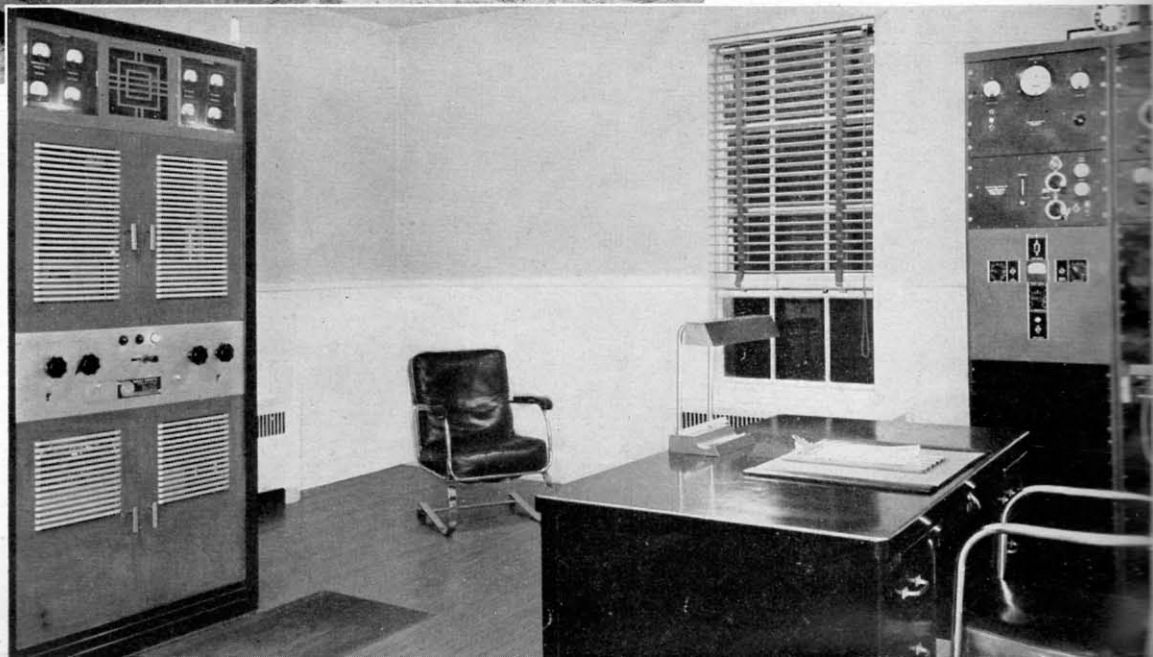


▶ MC Facing Studios B and C. 76-B1 Consolettes Placed for Convenient Operation.

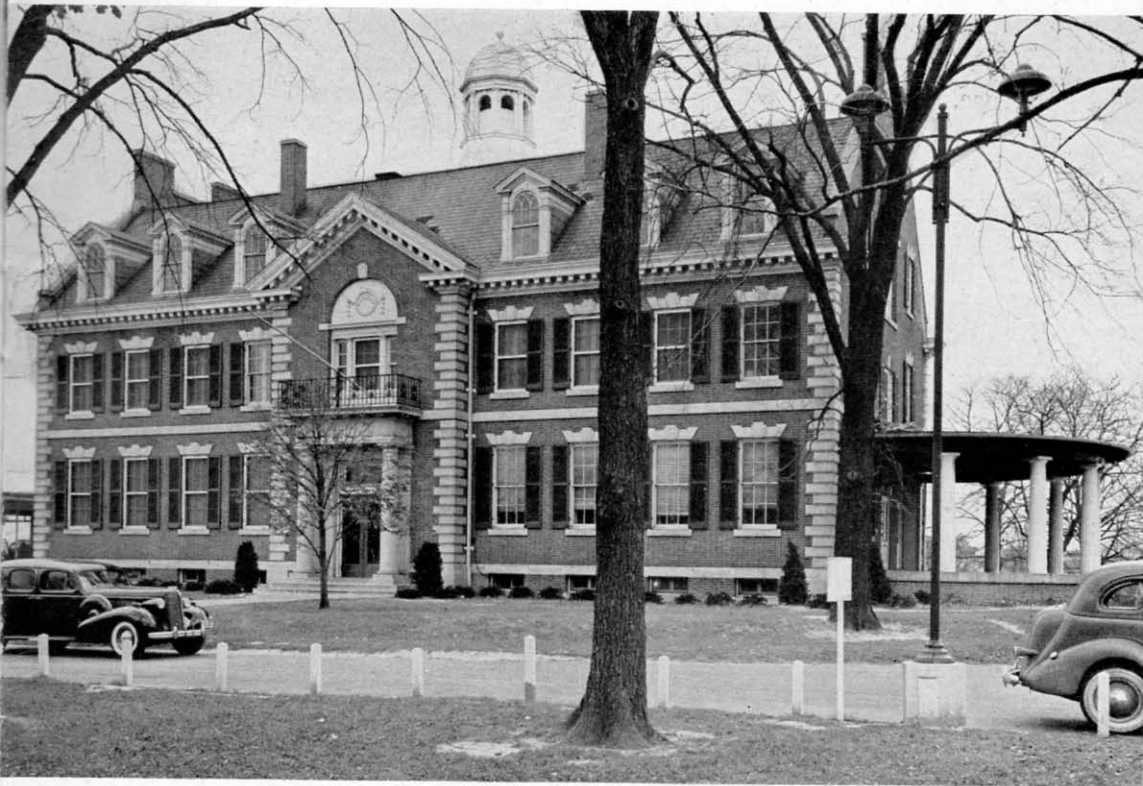


▲ Record and News Room.

▶ WCBM Baltimore Transmitter Plant showing RCA 250-D.



IN THE FREE STATE THIS 250 WATTER HOLDS A PROMINENT PLACE



▲ Studios—2nd and 3rd Floors and Auditorium in Rear.



▲ Transmitter Building and antenna at Baltimore Station.

◀ Studio A. Note 64-B Speaker and 44-BX Microphones.

