

SMARTNESS PLUS EFFICIENCY=WREC

Memphis Station Installation Among the Best

The office of Mr. Hoyt B. Wooten, owner of WREC, is equipped with a monitoring loudspeaker and selector box which permits instant monitoring of any studio, network or competitive station. ▶

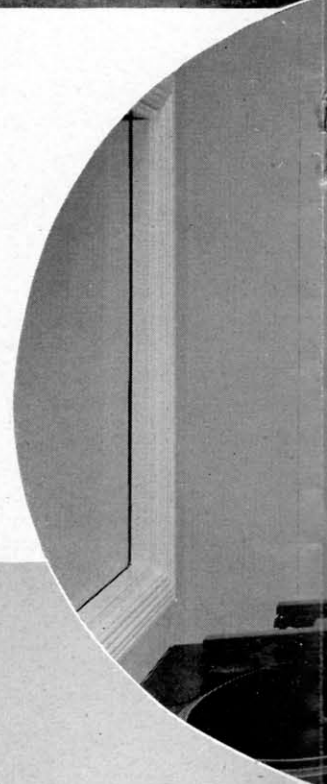


Studio B is equipped with an RCA 90-C Boom Microphone Stand.

Glass doors are used in the entrance to the studios from the hotel lobby. ▶

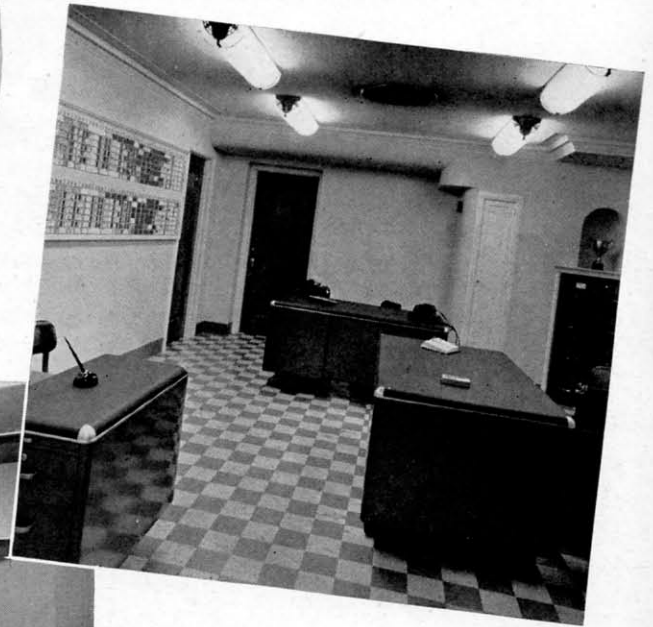


The WREC Transmitter Plant is attractively landscaped.





- ▲ Control Room for Studio B is provided with two announcements and an RCA 76-B1 Console. The Studio C Control and Master Control Racks may be seen through the window.
- ◀ The WREC Transcription Recording Room is equipped with two RCA 73-A DeLuxe Recorders. Note the RCA 64-B speaker mounted in the ceiling.



- ▲ The WREC Business Office is equipped with modern steel desks and sound treatment. The daily program schedule is on the left wall.



- ◀ Studio A provides space for a large orchestra and audience. Regular sound treatment has been made more effective by the use of non-parallel walls. Complete visibility is obtained from the raised individual control room. Tubular fluorescent lighting is employed in all studios and offices.